

THE 2021 WRANGLE REGATTA

White Rock Lake

June 5-6, 2021

Sailing Instructions

Revised May 11, 2021

1 Rules

The regatta will be governed by the rules as defined in *The Racing Rules of Sailing*.

2 Entries

The regatta is open to all boats of the Butterfly. Competitors may enter by registering and paying the entry fee.

3 Notices to Competitors

Notices to competitors will be posted on the north door of the White Rock Boat Club clubhouse.

4 Changes in Sailing Instructions

Any change in the Sailing Instructions will be posted on the notice board no later than 1 hour before the scheduled start of the first race each day, except that any changes made on the day of the competitors meeting will be posted within 20 minutes following the end of said meeting.

5 Signals Made Ashore

Signals made ashore will be displayed from the Race Committee boat. If a postponement is signaled ashore, the warning signal will be made not less than 30 minutes after flag AP is lowered.

6 Schedule of Races

Saturday – June 5

0830 – 0930 Registration and continental breakfast

0930 Competitors meeting

1015 Warning signal for first start

Lunch ashore at discretion of the race committee

Afternoon races to follow lunch

Sunday - June 6

0900 Continental breakfast

1000 Warning signal for first start of the day

No warning signal will be made after 1200 (Noon)

Award presentation to follow as soon as possible after the last race

7 Check in on the Water

Prior to the first warning signal of the day, each competitor shall sail past the Race Committee boat, hail its sail number and be acknowledged by the Race Committee. Failure to check in may result in a 20% scoring penalty, the number of places to be determined in accordance with RRS 44.3c. This alters RRS 63.1.

8 Courses

The diagrams in attachment A show the courses, including the order in which marks are to be passed and the side on which each mark is to be left.

9 Marks

9.1 Marks will be movable orange spheres.

9.2 New marks, as provided in instruction 12, will be orange spheres with a black band.

10 The Start

10.1 Races will be started using rule 26.

10.2 The starting line will be between a nearby mark of the course and a staff displaying an orange flag on the Race Committee boat.

10.3 A boat starting later than 5 minutes after the starting signal will be scored DNS without a hearing. This changes rules A4 and A5.

11 Individual Recalls

Individual Recalls will be signaled in accordance with rule 29.1. In addition, the committee will attempt to hail the number of the offending boat(s). Failure of the over-early boat(s) to hear such notification, or the committee's failure to hail, will not be grounds for redress.

12 Change of the Next Leg of the Course

To change the next leg of the course, the race committee will lay a new mark and remove the original mark as soon as practicable. When in a subsequent change a new mark is replaced, it will be replaced by an original mark.

13 The Finish

The finish line will be between a nearby mark of the course and a staff displaying a blue flag on a Race Committee boat.

14 Time Limit

14.1 The time limit for each race will be 60 minutes for the first boat to sail the course and finish.

14.2 Boats failing to finish within 30 minutes after the first boat finishes shall be scored points for the finishing position of the last place finisher plus one more point. This changes rules 35, A4 and A5.

15 Protests

Protests shall be delivered to the Race Committee at White Rock Boat Club within 30 minutes after the race committee boat docks. Hearings will be held as soon as possible after racing each day at the White Rock Boat Club.

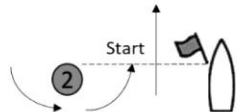
16 Scoring

Six races are planned. One race constitutes a regatta. The low point scoring system of Appendix A will apply except a boat's series score will be the total of her race scores.

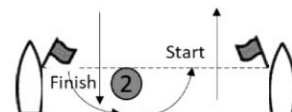
Attachment A: Course Diagrams



W (Odd # of legs with upwind finish)

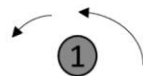


W (Even # of legs with downwind finish)

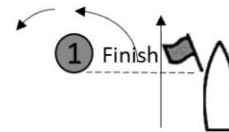
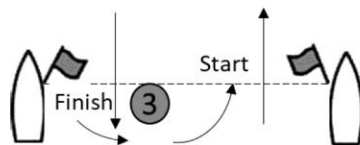
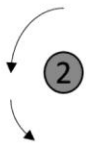


W1	Start - Finish
W3	Start - 1 - 1a - 2 - Finish
W5	Start - 1 - 1a - 2 - 1 - 1a - 2 - Finish
W2	Start - 1 - 1a - Finish

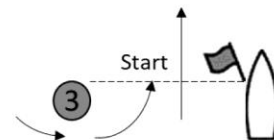
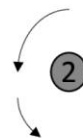
W4	Start - 1 - 1a - 2 - 1 - 1a - Finish
W6	Start - 1 - 1a - 2 - 1 - 1a - 2 - 1 - 1a - Finish



G (Gold Cup)



T/O (Triangle and Olympic)



G	Start - 1 - 2 - 3 - 1 - Finish

T1	Start - 1 - 2 - 3 - Finish
T2	Start - 1 - 2 - 3 - 1 - 2 - 3 - Finish
O	Start - 1 - 2 - 3 - 1 - 3 - Finish